



Figure 1. Example of UCB and Clark Pest Control research team examining a potential candidate home for the study; location Santa Ana, CA. Included in the image from left to right are V. Lewis and S. Moore, UC Berkeley and M. Red, cooperating PMP.



Figure 2. AE monitoring of board for drywood termite activity in Glendora, CA. Include in image is R. Tabuchi, UC Berkeley.



Figure 3. Example of drilling a board infested with drywood termites before Treatment; location Torrance, CA. Included in image is M. Red, Clark Pest Control.



Figure 4. Example of injecting Optigard into infested board; location Petaluma, CA. Included in image is M. Red, Clark Pest Control.





Figure 5. A high-degree of difficulty local-treatment; inspection and treatment conducted in Lake Forest, CA. Included in image is V. Lewis, UC Berkeley.

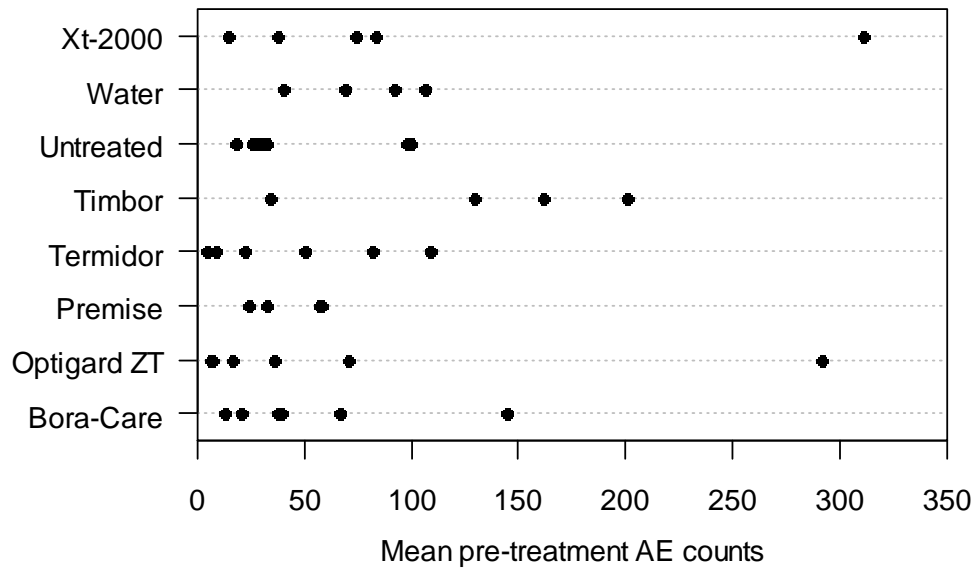


Figure 6. Point scatter plot of pre-treatment AE counts prior to treatments. Each point represents the mean of an individual field infestation.

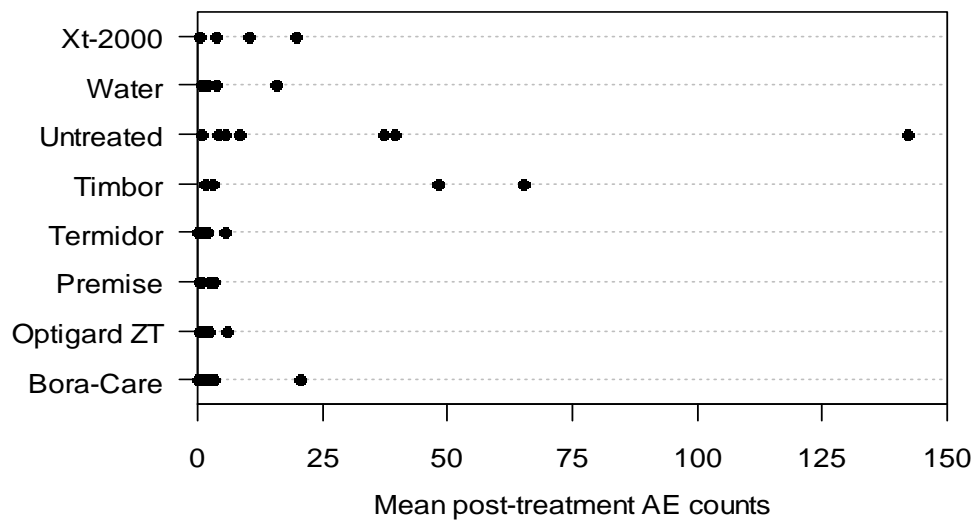


Figure 7. Point scatter plot of post-treatment AE counts prior to treatments. Each point represents the mean of an individual field infestation.